

## Pediatric Fundamental Critical Care Support

P-FCCS is a two day comprehensive course addressing the fundamental management principles for the first 24 hours of pediatric critical care. This course is a welcome addition to the Society of Critical Care Medicine's fundamentals of critical care education series. P-FCCS is a major resource for those interested in learning how to recognize critical illness and initiate care for the critically ill pediatric patient, in the absence of a pediatric specialist or intensivist. It also serves as a valuable base-line education tool for those entering the field of pediatric critical care.

## Purpose of P-FCCS

To prepare non-intensivists and non-pediatric specialists for post-resuscitation management of the critically ill pediatric patient until transfer or appropriate critical care consultation can be arranged.

To assist in dealing with the acute deterioration of the critically ill pediatric patient or the sudden deterioration of a previously stable patient.

## Course Objectives

Prioritize assessment needs for the critically ill or injured infant and child

Select appropriate diagnostic tests

Identify and respond to significant changes in the unstable pediatric patient

Recognize and initiate management of acute life-threatening conditions

Determine the need for expert consultation and/or patient transfer and preparing the practitioner for optimally accomplishing that transfer

## Lecture Topics

Introduction to course

Diagnosis and Management of Respiratory Failure

Cardiovascular Evaluation and Management of Shock

Neurologic Emergencies

Management of Trauma in Children

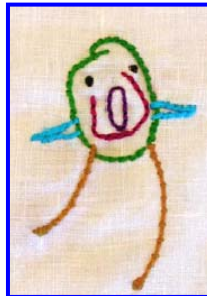
Fluids and Electrolytes

Transport of the Critically Ill Child

Diagnosis and Management of Acute Infections

Sedation, Analgesia and Pharmacologic Management

Post-Operative Care



Participants will receive a Pediatric FCCS textbook and student packet once registration and payment have been received. The days begin at 7:00am with a complimentary continental breakfast and sign in. Morning sessions consist of a series of 30-40 minute lectures beginning at 8:00am, presented by Physicians, PAs, EMT-Ps, NPs and RNs. Catered lunch is provided on site both days. Tours of the MedFlight facility are also given at this time. The afternoons consist of breakout sessions of interactive skill stations, with practical, hands on applications and "real life" scenarios. The days conclude at 5:00pm. Pre and post tests will validate the students' knowledge accrual following participation in this course. Tests have been structured to reflect the Course content. Pre-tests will be reviewed throughout the course. Post tests are graded and results are individually reviewed with the students. Individuals who successfully complete the required provider (70% on post-test) or instructor (80%) course will receive a Certificate of Successful Completion from the SCCM.

**Does your organization have a specific educational need? Contact us to see what Boston MedFlight can offer!**

## Skill Stations

Airway Evaluation and Management

Ventilation I, II

Cardiovascular Evaluation and Shock

Invasive Device Evaluation and Potential Complications

Post-initial Resuscitation Management of Accidental and Non-accidental Trauma and Poisoning

Transport of the Critically Ill Child



## Course Registration



Register online [www.bostonmedflight.org](http://www.bostonmedflight.org)

Name \_\_\_\_\_  
Exactly as it appears on your driver's license

Primary Specialty  MD  RN  PA  EMT-P

Other \_\_\_\_\_

Mailing Address \_\_\_\_\_

Daytime Phone \_\_\_\_\_

Email \_\_\_\_\_

Birth date (required by base security) \_\_\_\_/\_\_\_\_/\_\_\_\_

Site Affiliation \_\_\_\_\_

Please select which 2-day course you would like to attend:

May 3-4, 2012

Oct 12; 19, 2012

*Registration deadline: One week prior to course. Tuition for the course is \$300.00 (NEAA members \$250.00) which includes course, book, continental breakfast and catered lunch. Please include payment with your registration. Make check payable to:*

*Boston MedFlight  
Robins Street Hangar 1727  
Hanscom Air Force Base  
Bedford, MA 01730*

**Please indicate the payment is for P-FCCS Course**

*\*\*\*Boston MedFlight is located on an active military installation. Registration is required one week prior to course to ensure that visitors have access to the base. Directions for getting to the MedFlight facility will be mailed with the student packet once the registration and payment have been received.*

# 2012 Schedule



Also Available !

- Fundamental Critical Care Support
- Introduction to Mechanical Ventilation
- The Picture of Health: A Review of Radiologic Images
- Annual Critical Care Conference

Visit our website for a brochure and to register online

[www.bostonmedflight.org](http://www.bostonmedflight.org)



Your Life. Our Mission.

Robins Street Hangar 1727  
Hanscom Air Force Base  
Bedford, MA 01730

Phone 781-863-2213  
Fax 781-863-2791

[www.bostonmedflight.org](http://www.bostonmedflight.org)

## Who Should Attend the Pediatric FCCS

Targeted participants include: Hospitalists caring for potentially unstable, critically ill or injured pediatric patients; Advanced Practice Nurses and Physician Assistants with limited pediatric practice; Rapid response/Emergency Medical Team members; Critical Care fellows beginning their training; Emergency medicine physicians who do not routinely care for pediatric patients; Nurses caring for complex and potentially unstable pediatric patients and Pre-hospital providers with lengthy patient transfer times.



13.25 Contact Hours have been provided by the *Air & Surface Transport Nurses Association*. ASTNA is an approved provider for the California Board of Registered Nursing CEP 13575

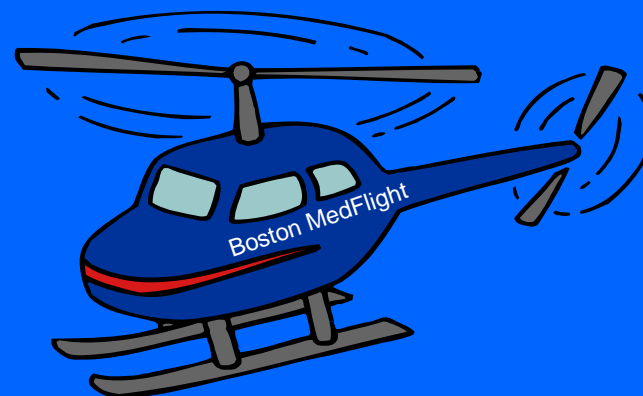
MA OEMS Approved for 16 hours Continuing Education Credits

[www.bostonmedflight.org/outreach.html](http://www.bostonmedflight.org/outreach.html)

Boston MedFlight is a CAMTS accredited Critical Care Transport service. BMF's mission is to link those most critically ill and injured patients with the resources they need. The service is available 24 hours a day and seven days a week.

As a **not-for-profit** organization, BMF transports patients regardless of their ability to pay. MedFlight supported by a consortium of Boston hospitals including Beth Israel Deaconess Medical Center, Boston Medical Center, Brigham and Women's Hospital, Children's Hospital, Massachusetts General Hospital, and Tufts Medical Center. Since 1985, Boston MedFlight has played an integral role as part of the Massachusetts EMS system and the community hospitals of New England.

[www.bostonmedflight.org](http://www.bostonmedflight.org)



Contact:

Mary Arredondo  
Education Coordinator  
[mary.arredondo@bostonmedflight.org](mailto:mary.arredondo@bostonmedflight.org)  
Boston MedFlight

781-863-2213 Fax: 781-863-2791



2  
0  
1  
2

Hosted by:



Your Life. Our Mission.